



X CONGRESO  
INTERNACIONAL  
DE INNOVACIÓN  
APLICADA  
Madrid 26, 27 y 28 de junio

# SOCIAL ENTREPRENEURSHIP AND EDUCATION: THE CASE STUDY OF NILÜFER

---

Prof. Dr. Bekir Parlak

Umut Berker Sevilmiş

Bursa Uludağ University, Türkiye

bepar@uludag.edu.tr, umutberkersevilmis@gmail.com

# SOCIAL ENTREPRENEURSHIP CONCEPTUAL FRAMEWORK

Social enterprises are a unique breed of businesses. They are legally bound to pursue a social or environmental mission, using trade as their primary tool to achieve that goal. This focus on social impact sets them apart from traditional businesses. Unlike charities, social enterprises generate most of their income through trade, making them financially self-sustaining. Profits play a crucial role in social enterprises, but not in the way they do for traditional businesses. Here, the majority of profits are reinvested back into achieving the social mission, creating a self-perpetuating cycle of positive impact.



# USING ACADEMIC KNOWLEDGE FOR URBAN CHALLENGES



**University – public sector partnership is the main key for developing innovative projects empowering students to take part in solutions.**

**Young people with their brilliant minds can provide crucial contribution to global challenges when they have the opportunity which can be provided by these kind of cross-sectoral partnerships as a great tool to open new horizons for social development. Public authority-university partnerships represent a powerful engine driving innovation and tackling complex challenges. These collaborations leverage the distinct strengths of both entities, fostering positive change across diverse sectors. Benefits of this collaboration can be specified accordingly:**



# USING ACADEMIC KNOWLEDGE FOR URBAN CHALLENGES



- ✓ **Complementary Expertise**
  - ✓ **Fostering Innovation**
  - ✓ **Education and Training**
  - ✓ **Technology Transfer**
- ✓ **Sustainable Urban Infrastructure**
- ✓ **Improved Public Health Outcomes**
  - ✓ **Economic Development**



# SOCIAL INNOVATION AND SOCIAL ENTREPRENEURSHIP IN LOCAL ADMINISTRATIONS

## Social Innovation in Local Governments;

- ✓ Sustainability, inclusiveness and innovation.
- ✓ Participatory governance processes

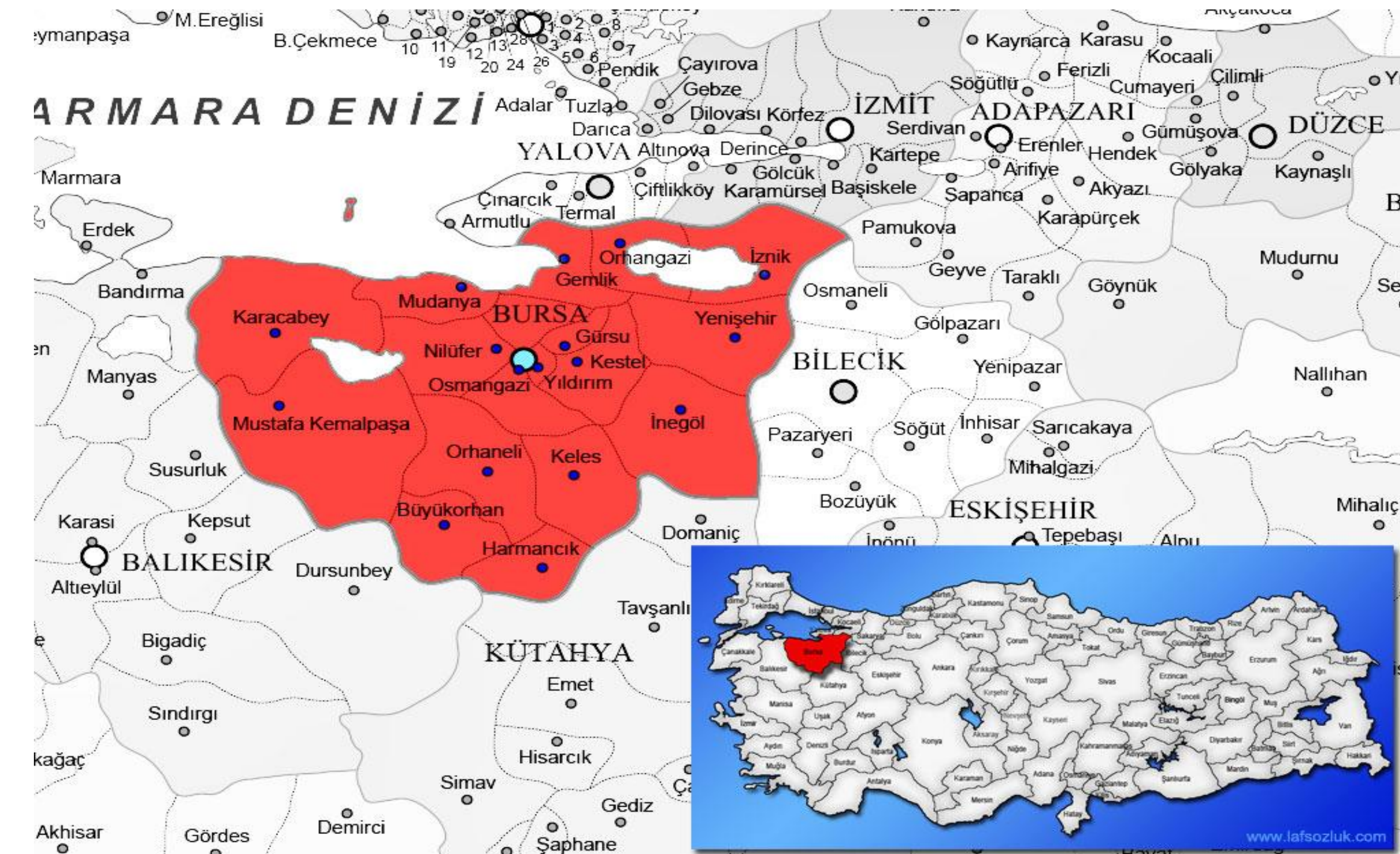
## Social Entrepreneurship in Local Governments;

- ✓ Sustainable Development Goals of the United Nations
- ✓ Need-oriented solutions via empathizing target group.
  - ✓ Sustainable approach
- ✓ Solutions for urban challenges with a design of circular economy



# CASE OF NILÜFER

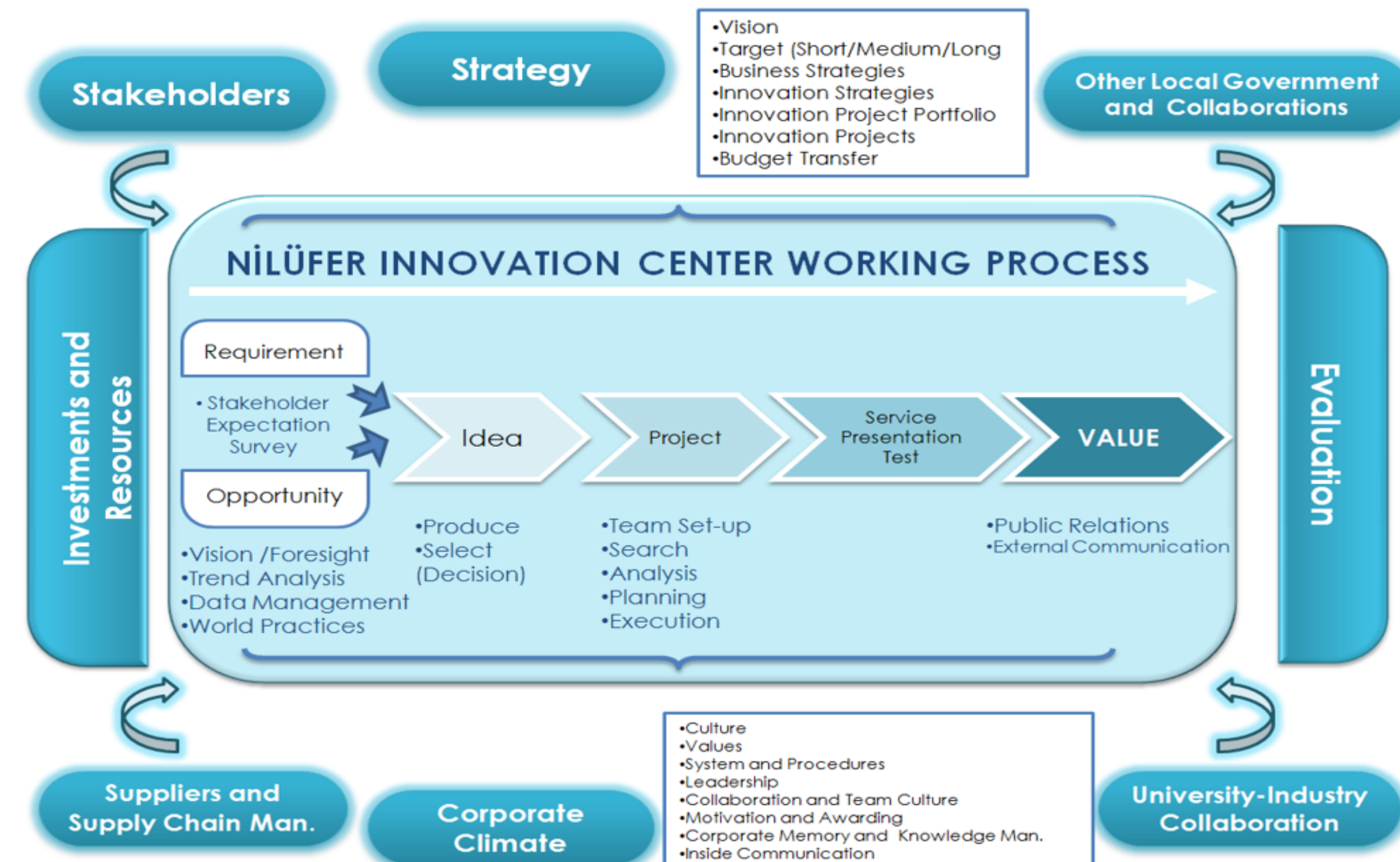
## NILÜFER SOCIAL ENTREPRENEURSHIP CENTRE



# CASE OF NILÜFER

## NILÜFER SOCIAL ENTREPRENEURSHIP CENTRE

Nilüfer Innovation Center's (2017) working process focused on collecting innovative ideas from all stakeholders (including citizens who are also their target groups) bringing together with suppliers and resources, focusing on requirements and opportunities, creating projects, testing and evaluating the outcomes and creating value. The center used strategies of the municipality as its starting point, collaborated with other public bodies, industry and university. With this approach, collaboration between university and the municipality started.



# CASE OF NILÜFER

## NILÜFER SOCIAL ENTREPRENEURSHIP CENTRE





# CASE OF NILÜFER

## NILÜFER SOCIAL ENTREPRENEURSHIP CENTRE

Nilüfer Social Entrepreneurship Center (2020); the municipality established a physical place with 5 different areas;

- ✓ Educational training hall,
- ✓ Prototyping area with 3D printers,
- ✓ Shared office (for 6 entrepreneurs at once),
  - ✓ Socializing area,
- ✓ Meeting rooms (for groups and for one-to-one meetings)



# CASE OF NILÜFER

## NILÜFER SOCIAL ENTREPRENEURSHIP CENTRE



# CASE OF NILÜFER

## NILÜFER SOCIAL ENTREPRENEURSHIP CENTRE



# UNIVERSITY – PUBLIC AUTHORITY COLLABORATION

## REPLICATION OF NILÜFER'S CASE

While the local administrations are key actors of local democracy, universities are the main institutions creating systematic knowledge using previous experiences. Cities must design their services with the help of universities including experts and professors in the process. And universities should use municipal power to enlarge their research areas, reaching out their sample groups. This collaboration brings the utmost success to deal with social challenges with contribution of private sector and civil society organizations.





X CONGRESO  
INTERNACIONAL  
DE INNOVACIÓN  
APLICADA  
Madrid 26, 27 y 28 de junio

thank  
you

Gracias